



REGIONAL SPECIALISED METEOROLOGICAL CENTRE-TROPICAL CYCLONES, NEW DELHI
TROPICAL CYCLONE ADVISORY BULLETIN NO. 23

FROM: RSMC –TROPICAL CYCLONES, NEW DELHI

TO: STORM WARNING CENTRE, NAYPYI TAW (MYANMAR)
STORM WARNING CENTRE, BANGKOK (THAILAND)
STORM WARNING CENTRE, COLOMBO (SRILANKA)
STORM WARNING CENTRE, DHAKA (BANGLADESH)
STORM WARNING CENTRE, KARACHI (PAKISTAN)
METEOROLOGICAL OFFICE, MALE (MALDIVES)
OMAN METEOROLOGICAL DEPARTMENT, MUSCAT (THROUGH RTH JEDDAH)
YEMEN METEOROLOGICAL SERVICES, REPUBLIC OF YEMEN (THROUGH RTH JEDDAH)
NATIONAL CENTRE FOR METEOROLOGY, UAE (THROUGH RTH JEDDAH)
PRESIDENCY OF METEOROLOGY AND ENVIRONMENT, SAUDI ARABIA (THROUGH RTH JEDDAH)
IRAN METEOROLOGICAL ORGANISATION, (THROUGH RTH JEDDAH)
QATAR METEOROLOGICAL DEPARTMENT (THROUGH RTH JEDDAH)

TROPICAL CYCLONE ADVISORY NO. 23 FOR NORTH INDIAN OCEAN (THE BAY OF BENGAL AND ARABIAN SEA) VALID FOR NEXT 120 HOURS ISSUED AT 2100 UTC OF 26.05.2021 BASED ON 1800 UTC OF 26.05.2021.

SUB: CYCLONIC STORM ‘YAAS’ (PRONOUNCED AS ‘YASS’) WEAKENED INTO A DEEP DEPRESSION OVER SOUTH JHARKHAND.

THE CYCLONIC STORM ‘YAAS’ (PRONOUNCED AS ‘YASS’) OVER NORTH INTERIOR ODISHA AND ADJOINING JHARKHAND MOVED WEST-NORTHWESTWARDS WITH A SPEED OF ABOUT 15 KMPH DURING PAST 6 HOURS, WEAKENED INTO A **DEEP DEPRESSION** AND LAY CENTRED AT 1800 UTC OF THE 26TH MAY, 2021 OVER SOUTH JHARKHAND AND ADJOINING NORTH INTERIOR ODISHA, NEAR LATITUDE 22.4°N AND LONGITUDE 85.8°E, ABOUT 60KM SOUTH-SOUTHWEST OF JAMSHEDPUR (42798) AND 110 KM SOUTH SOUTH-EAST OF RANCHI (42701)

FORECAST TRACK AND INTENSITY ARE GIVEN IN THE FOLLOWING TABLE:

DATE/TIME(UTC)	POSITION LAT. °N/ LONG. °E	MAXIMUM SUSTAINED SURFACE WIND SPEED (KMPH)	CATEGORY OF CYCLONIC DISTURBANCE
26.05.21/1800	22.4 /85.8	55-65 GUSTING TO 75	DEEP DEPRESSION
27.05.21/0000	22.9/85.1	35-45 GUSTING TO 55	DEPRESSION
27.05.21/0600	23.5/84.6	25-35 GUSTING TO 45	LOW PRESSURE AREA

THE MAXIMUM SUSTAINED WIND SPEED IS 30 KNOTS GUSTING TO 40 KNOTS AROUND SYSTEM CENTRE. UNDER THE INFLUENCE OF LAND INTERACTION ALONG WITH HIGH VERTICAL WIND SHEAR AND WEAK OUTFLOW IN UPPER LEVELS, THE SYSTEM WOULD FURTHER WEAKEN GRADUALLY.

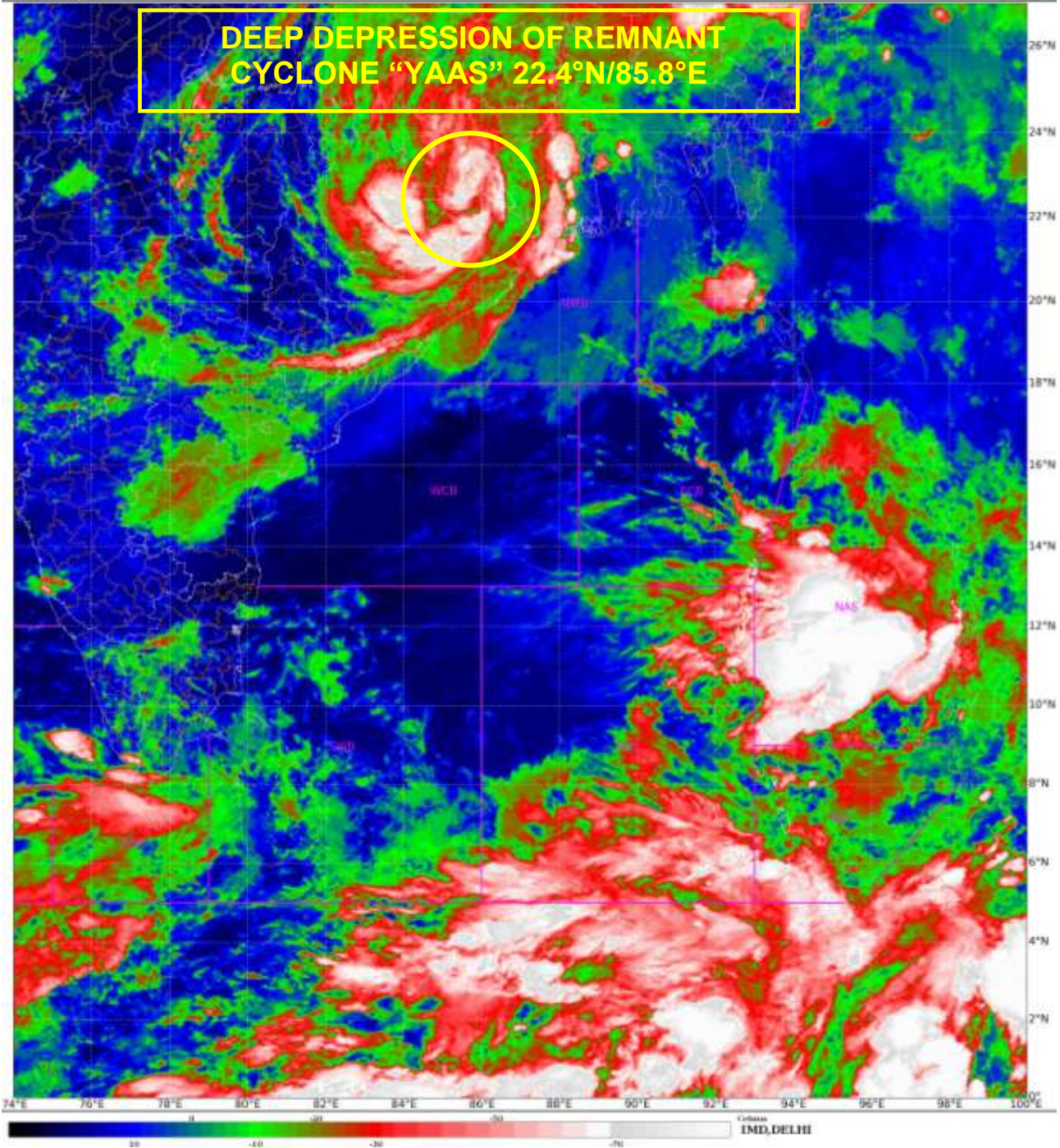
AS PER SATELLITE IMAGERY BASED ON 1800 UTC OF THE 26TH MAY, INTENSE CONVECTIVE CLOUD MASS LIES OVER SOUTHEAST JHARKHAND & NORTH ODISHA, JHARKHAND AND ADJOINING SOUTHEAST BIHAR AND MODERATE TO INTENSE CONVECTION LIES OVER SOUTH ODISHA, CHATTISGARH, NORTH BIHAR AND GANGETIC WEST BENGAL.

THIS IS THE LAST TROPICAL CYCLONE ADVISORY BULLETIN FOR CYLONIC STORM “YASS”.HOWEVER, TROPICAL WEATHER OUTLOOK FOR NORTH INDIAN OCEAN WILL CONTINUE.

(D R PATTANAİK)
SCIENTIST-F RSMC NEWDELHI

PROBABILITY OF CYCLOGENESIS (FORMATION OF DEPRESSION)

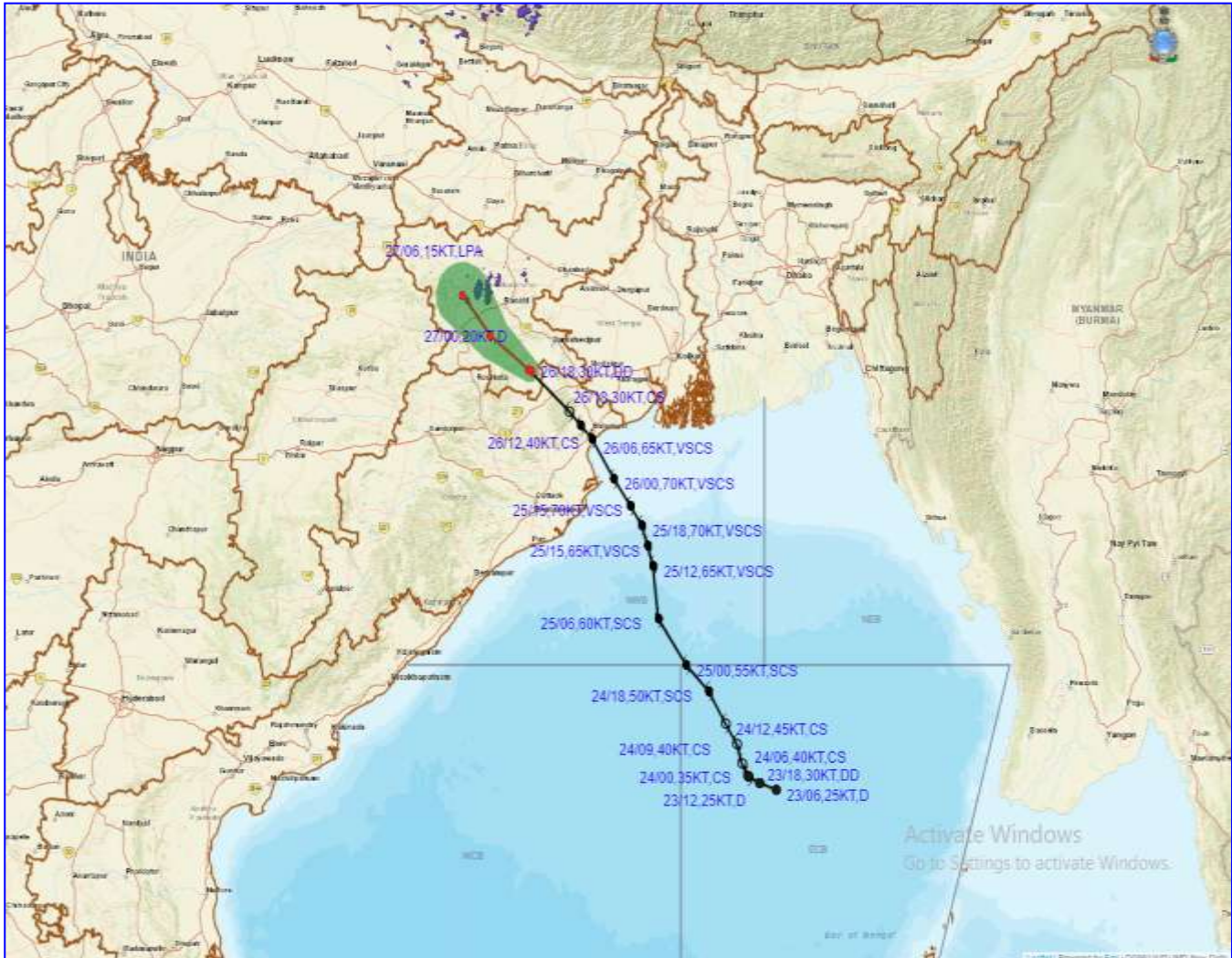
NIL: 0%, LOW: 1-25%, FAIR: 26-50%, MODERATE: 51-75% AND HIGH: 76-100%



PROBABILITY OF CYCLOGENESIS (FORMATION OF DEPRESSION)
NIL: 0%, LOW: 1-25%, FAIR: 26-50%, MODERATE: 51-75% AND HIGH: 76-100%



OBSERVED AND FORECAST TRACK ALONGWITH CONE OF UNCERTAINTY OF DEEP DEPRESSION (REMNANT OF VERY SEVERE CYCLONIC STORM "YAAS") OVER SOUTH JHARKHAND AND ADJOINING NORTH INTERIOR ODISHA BASED ON 1800 UTC OF 26th MAY, 2021



DATE/TIME IN UTC
 IST=UTC + 0530
 L: LOW PRESSURE AREA
 WML: WELL MARKED LOW PRESSURE AREA
 D: DEPRESSION (17-27 KT)
 DD: DEEP DEPRESSION (28-33 KT)
 CS: CYCLONIC STORM (34-47 KT)
 SCS: SEVERE CYCLONIC STORM (48-63KT)
 VSCS: VERY SEVERE CYCLONIC STORM (64-89 KT)
 ESCS: EXTREMELY SEVERE CYCLONIC STORM (90-119 KT)
 SuCS: SUPER CYCLONIC STORM (\geq 20 KT)

- LESS THAN 34 KT
- 34-47 KT
- \geq 48 KT
- OBSERVED TRACK
- FORECAST TRACK
- CONE OF UNCERTAINTY

PROBABILITY OF CYCLOGENESIS (FORMATION OF DEPRESSION)

NIL: 0%, LOW: 1-25%, FAIR: 26-50%, MODERATE: 51-75% AND HIGH: 76-100%



OBSERVED AND FORECAST TRACK ALONGWITH QUADRANT WIND DISTRIBUTION OF DEEP DEPRESSION (REMNANT OF VERY SEVERE CYCLONIC STORM "YAAS") OVER SOUTH JHARKHAND AND ADJOINING NORTH INTERIOR ODISHA BASED ON 1800 UTC OF 26th MAY, 2021



DATE/TIME IN UTC
 IST=UTC + 0530
L: LOW PRESSURE AREA
WML: WELL MARKED LOW PRESSURE AREA
D: DEPRESSION (17-27 KT)
DD: DEEP DEPRESSION (28-33 KT)
CS: CYCLONIC STORM (34-47 KT)
SCS: SEVERE CYCLONIC STORM (48-63KT)
VSCS: VERY SEVERE CYCLONIC STORM (64-89 KT)
ESCS: EXTREMELY SEVERE CYCLONIC STORM (90-119 KT)
SuCS: SUPER CYCLONIC STORM (\geq 120 KT)

● LESS THAN 34 KT
 ○ 34-47 KT
 ● \geq 48 KT
 — OBSERVED TRACK
 — FORECAST TRACK
 — CONE OF UNCERTAINTY
AREA OF MAXIMUM SUSTAINED WIND SPEED:
 ■ 28-33 KT (52-61 KMPH)
 ■ 34-49 KT (62-91 KMPH)
 ■ 50-63 KT (92-117 KMPH)
 ■ \geq 64 KT (\geq 118 KMPH)

IMPACT OVER THE SEA

MSW (knot/kmph)	Impact	Action
28-33 (52-61)	Very rough seas	Total suspension of fishing operations
34-49 (62-91)	High to very high seas	Total suspension of fishing operations
50-63 (92-117)	Very high seas	Total suspension of fishing operations
\geq 64 (\geq 118)	Phenomenal	Total suspension of fishing operations

PROBABILITY OF CYCLOGENESIS (FORMATION OF DEPRESSION)

NIL: 0%, LOW: 1-25%, FAIR: 26-50%, MODERATE: 51-75% AND HIGH: 76-100%